

1 **Nobilmente** ♩ = 72

Em G A C D Em B

Eve - ning rise, spi - rit come, sun goes down when the day is done.
A - vond valt, al - les rust, kijk hoe zon - licht de ein - der kust.

Em G A Am C D Em

Mo - ther Earth a - wa - kens me with the heart-beat of the sea.
Aar - de spreekt in don - k're nacht, ik____ voel haar stil - le kracht.

2

Eve - - ning rise, spi - - rit come. Oh,

Mo - ther Earth a - - wa - kens me.

3

Eve - ning rise,____ spi - rit____ come, sun goes down when the day is____ done.
A - vond valt,____ al - les____ rust, kijk hoe zon - licht de ein - der____ kust.

Mo - ther earth a - wa - kens_ me with the heart-beat of the____ sea.
Aar - de spreekt in don - ke - re nacht, ik____ voel haar stil - le____ kracht.

4

Eve - ning rise, spi - rit come, sun goes down when the day is done.
A - vond valt, al - les rust, kijk hoe zon - licht de ein - der kust.

Mo - ther Earth a - wa - kens me with the heart - beat____ of the sea.
Aar - de spreekt in don - k're nacht, ik____ voel haar____ stil - le kracht.

C Part - Evening Rise

5

Bass:



Eve - ning rise, spi - rit come, sun goes down when the day is done.
A - vond valt, al - les rust, kijk hoe zon - licht de ein - der__ kust.



Mo - ther Earth a - wa - kens me with the heart - beat of the sea.
Aar - de spreekt in don - k're nacht, ik__ voel haar stil - le kracht.

6

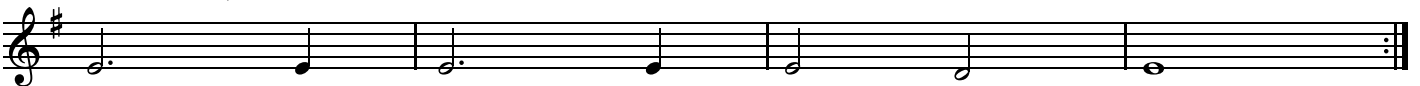
Optional (easy) part:

Em /G A C D Em B7



Eve - - ning rise, spi - - rit come. Oh,
A - - vond valt, al - - les rust, Oh,

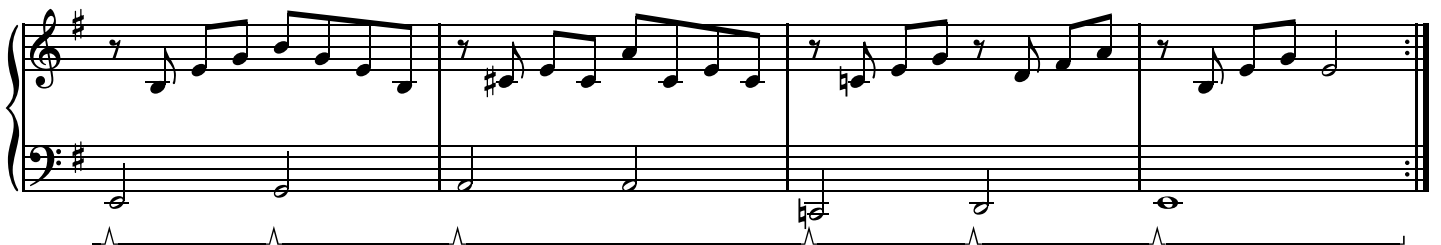
Em /G A Am C D



Mo - - ther Earth a - - wa - - kens me.
Aar - - de spreekt in don - - k're nacht.

7

Piano (notation in C):



8

Hand drum or low tom



1 **Nobilmente** ♩ = 72

F#m A B D E F#m C#

F#m A B Bm D E F#m

2

3

4

Bb Part T.C. - Evening Rise

5

Bass:

Two staves of music in treble clef with a key signature of three sharps (F#, C#, G#). The first staff contains the main bass line for measure 5, and the second staff contains an alternative ending for the same measure.

6

Optional (easy) part:

F#m /A B D E F#m C#7

Two staves of music in treble clef with a key signature of three sharps. The first staff shows the optional part with chord symbols F#m, /A, B, D, E, F#m, and C#7 above the notes. The second staff shows an alternative ending for the same part.

7

Piano (notation in C):

Two systems of piano notation. Each system consists of a grand staff (treble and bass clefs) with a key signature of one sharp (F#). The first system includes a 'Ped.' marking under the bass line. The second system shows an alternative ending for the piano part.

8

Hand drum or low tom

Two staves of music in a common time signature, using a drumstick symbol at the beginning of each staff. The notation represents a rhythmic pattern for a hand drum or low tom.

1 **Nobilmente** ♩ = 72

F#m A B D E F#m C#

F#m A B Bm D E F#m

2

3

4

Bb Part B.C. - Evening Rise

5

Bass:

Two staves of bass notation in G major (one sharp). The first staff contains the main bass line for measure 5, and the second staff contains the continuation of the line. The notes are: G2, A2, B2, C3, D3, E3, F#3, G3, A3, B3, C4, D4, E4, F#4, G4.

6

Optional (easy) part:

F#m /A B D E F#m C#7

Two staves of bass notation in G major. The first staff shows the optional bass line with chord symbols above: F#m, /A, B, D, E, F#m, C#7. The second staff shows the continuation of the line with chord symbols: F#m, /A, B, Bm, D, E.

7

Piano (notation in C):

Two staves of piano notation in G major. The first staff shows the piano accompaniment for measure 7, and the second staff shows the continuation. The notes are: G2, A2, B2, C3, D3, E3, F#3, G3, A3, B3, C4, D4, E4, F#4, G4.

8

Hand drum or low tom

Two staves of hand drum or low tom notation. The first staff shows the drum pattern for measure 8, and the second staff shows the continuation. The notes are: G2, A2, B2, C3, D3, E3, F#3, G3, A3, B3, C4, D4, E4, F#4, G4.

1 **Nobilmente** ♩ = 72

C#m E F# A B C#m G#

C#m E F# F#m A B C#m

2

3

4

E♭ Part - Evening Rise

5

Bass:

Two staves of music in G major (one sharp). The first staff contains the bass line for measure 5, starting with a quarter note G4, followed by quarter notes A4, B4, C5, D5, E5, F#5, G5, and a half note G5. The second staff continues the bass line for the next two measures, ending with a double bar line and repeat dots.

6

Optional (easy) part:

C#m /E F# A B C#m G#7

Two staves of music in G major. The first staff shows the optional part for measure 6 with notes G4, A4, B4, C5, D5, E5, F#5, and G5. Above the staff are the chords: C#m, /E, F#, A, B, C#m, G#7. The second staff continues the optional part for the next two measures, ending with a double bar line and repeat dots. Above the staff are the chords: C#m, /E, F#, F#m, A, B.

7

Piano (notation in C):

Two staves of piano notation in G major. The first staff shows the piano part for measure 7, starting with a quarter rest, followed by eighth notes G4, A4, B4, C5, D5, E5, F#5, and G5. The second staff continues the piano part for the next three measures, ending with a double bar line and repeat dots. A 'Ped.' marking is present under the first measure.

8

Hand drum or low tom

Two staves of notation for hand drum or low tom. The first staff shows the drum pattern for measure 8, starting with a quarter note, followed by eighth notes, quarter notes, and eighth notes. The second staff continues the drum pattern for the next three measures, ending with a double bar line and repeat dots.

1 **Nobilmente** ♩ = 72

Bm D E G A Bm F#

Bm D E Em G A Bm

2

3

4

F Part - Evening Rise

5 (bass part)

Two staves of musical notation for the bass part. The first staff contains a sequence of eighth and quarter notes. The second staff continues the sequence and ends with a double bar line and repeat dots.

6 Optional (easy) part:

Two staves of musical notation for an optional part. The first staff has notes with chord symbols Bm, /D, E, G, A, Bm, and F#7 above them. The second staff has notes with chord symbols Bm, /D, E, Em, G, and A above them. Both staves end with a double bar line and repeat dots.

7 Piano (notation in C):

Two staves of musical notation for a piano part. The first staff has a 'Ped.' marking under the first measure. Both staves end with a double bar line and repeat dots.

8 Hand drum or low tom

Two staves of musical notation for a hand drum or low tom part. The notation consists of vertical stems and horizontal lines representing rhythmic patterns. Both staves end with a double bar line and repeat dots.