

Vivace

The main melody is written in treble clef with a 6/8 time signature. It consists of four staves of music. The first staff contains the first five measures, the second staff the next five measures, the third staff the next five measures, and the fourth staff the final five measures. The melody is characterized by eighth and sixteenth notes, often beamed together, and includes some rests.

Baslijn:

The bass line is written in bass clef and consists of two staves of music. It features a steady eighth-note accompaniment that supports the main melody. The notes are primarily quarter and eighth notes, with some rests.

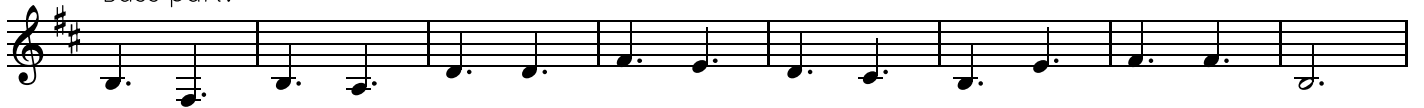
Akkorden:

The chord progression is shown in two lines of music in treble clef. The first line contains ten chords: Am, E, Am, G, C, E, Am/C, E, Am, D, Am/E, E7, Am. The second line contains ten chords: C, G, Am, E, Am/C, E, Am, G, C, D, E, Dm7, E7, Am. Each chord is represented by a vertical stack of notes on a staff.

Vivace

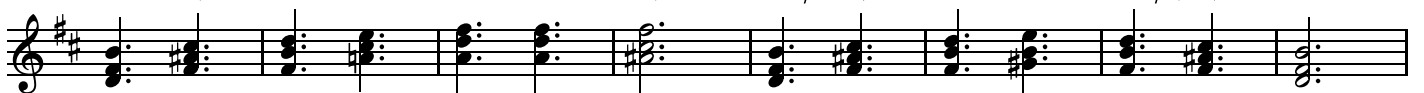


Bass part:



Chords:

Bm F# Bm A D F# Bm/D F# Bm E Bm/F# F#7 Bm



D A Bm F# Bm/D F# Bm A D E F# Em7 F#7 Bm



Vivace

Main musical notation for the Tarantella piece, consisting of four staves of music in bass clef with a key signature of two sharps (F# and C#) and a 6/8 time signature. The music features a rhythmic pattern of eighth and sixteenth notes with grace notes.

Bass:

Bass line musical notation, consisting of two staves of music in bass clef with a key signature of two sharps (F# and C#). The bass line consists of quarter and eighth notes.

Chords:

Bm F# Bm A D F# Bm/D F# Bm E Bm/F# F#7 Bm

D A Bm F# Bm/D F# Bm A D E F# Em7 F#7 Bm

Chord progression musical notation, consisting of two staves of music in bass clef with a key signature of two sharps (F# and C#). The chords are indicated by letters and symbols above the notes.

Vivace

The main melody is written on a treble clef staff in 6/8 time. The key signature has three sharps (F#, C#, G#). The melody consists of 12 measures of music, primarily using eighth and sixteenth notes with grace notes.

Bass:

The bass line is written on a treble clef staff in 6/8 time. It consists of 12 measures of music, primarily using quarter and eighth notes.

Chords:

The chord progression is written on a treble clef staff in 6/8 time. The key signature has three sharps (F#, C#, G#). The chords are indicated by letters above the staff.

Chords: F#m C# F#m E A C# F#m/A C# F#m B F#m/C# C#7 F#m

Chords: A E F#m C# F#m/A C# F#m E A B C# Bm7 C#7 F#m

Vivace

Baslijn:

Akkoorden:

Em B Em D G B Em/G B Em A Em/B B7 Em

G D Em B Em/G B Em D G A B Am7 B7 Em